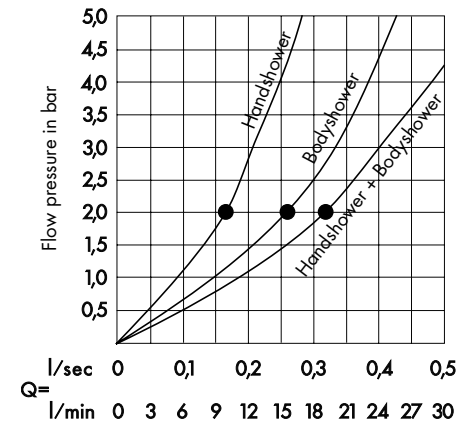


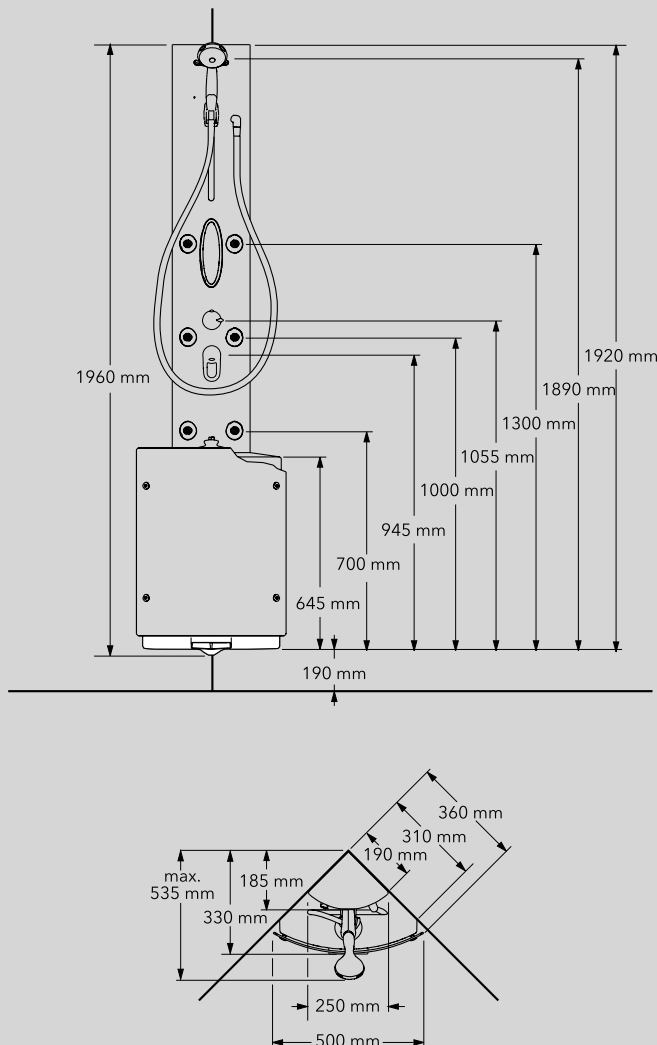
Technical Data

Required room height	2,21 m
Minimum flow pressure	2 bar
Recommended flow pressure	2 – 5 bar
Connection cold water	DN 15 1/2"
Connection warm water	DN 15 1/2"
Power supply	230 V / 50 Hz / 16 A
Protection grade	IPX5
Nominal power steam generator	3,3 kW

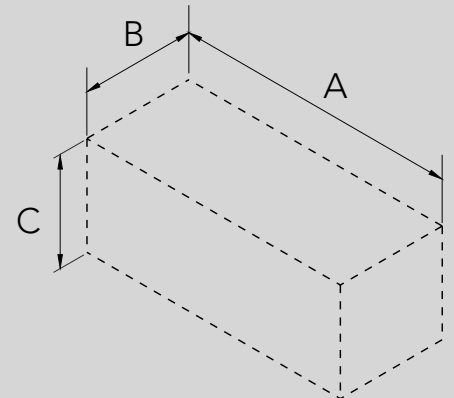
Flow Pressure Diagram



Dimensions



Packaging



Carton	1
Weight (kg):	52
Side A (mm):	2170
Side B (mm):	500
Side C (mm):	420

Component Steam/Shower ML/Steam

Instructions for Installation

Wiring conduit **A** (internal Ø 25 mm) must be provided to install the power supply cable (damp-proof cable 3 x 1.5 mm²). The provided power supply cable allows installing the main connection up to 6 m away from the steam generator. The main connection must be accessible at any time and must be installed in a dry area (protection zone 3).

The complete power supply runs via 230 V / 50 Hz and must be protected by a 2-pole residual current operated circuit breaker with ≤ 30 mA fault current.

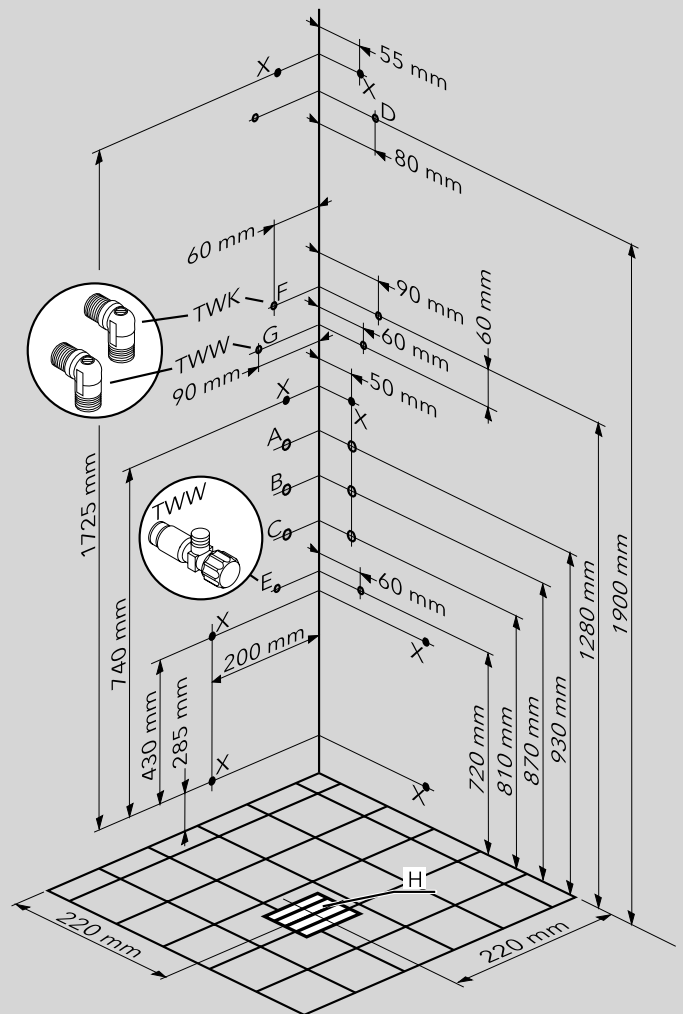
Wiring conduit **B** (internal Ø 25 mm) is required for the connection of the transformer. The transformer cable allows installing the transformer up to 6 m away from the steam generator. The transformer must be accessible at any time and must be installed in a dry area (protection zone 3).

Wiring conduit **C** (internal Ø 25 mm) is only necessary if an external light will be connected. The provided extension cable allows connecting an external light up to 4 m away from the steam generator.

Connection sleeve **D** (DN 15 1/2", flush with the tiles) must be installed if an overhead shower will be connected.

Connections for water supply have to be installed according to the currently valid DIN 1988 / EN 1717 and DIN 1986 / EN 12056 as well as to the local regulations (connection sleeve DN15 1/2", flush with tiles).

References



- A, B, C Cabel conduit internal Ø 25 mm
- D Connection sleeve for overhead shower (DN 15 1/2")
- E,G TWW hot water (DN 15 1/2")
- F TWK cold water (DN 15 1/2")
- H Plan waterdrainage Ø 50 mm

Component Steam/Shower ML/Steam